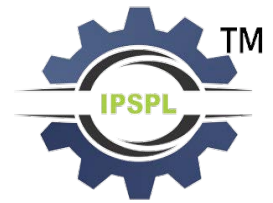


DIAPHRAGM SEAL

HEAVY DUTY MINI SEAL



IPS-DS-04

SPECIAL FEATURES

- ALL AISI 316 SS CONSTRUCTION
- LIGHT WEIGHT
- ECONOMICAL
- IDEAL CHOICE FOR HIGH PRESSURE
- THE DIAPHRAGM IS WELDED TO THE BODY TO ENSURE SEPARATION OF THE FILLING FLUID FROM THE PROCESS MEDIUM.

APPLICATIONS

DIAPHRAGM SEALS ARE DESIGNED TO ISOLATE THE SENSING ELEMENT OF PRESSURE GAUGES AND PRESSURE SWITCHES FROM PROCESS FLUIDS THAT THEY MAY BE CORROSIVE, VISCOUS, SEDIMENTOUS AND / OR WITH A HIGH TEMPERATURE.

SPECIFICATIONS

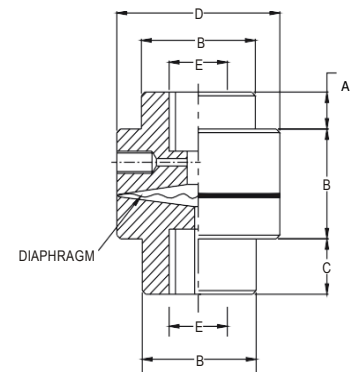
STANDARD VERSION

Seal Type	: S11 = -1 kg/cm ² to 0 & 0 to 4 kg/cm ² (Standard)
	: S12 = 6 kg/cm ² to 70 kg/cm ²
	: S13 = 100 kg/cm ² to 400 kg/cm ²
	: S14 = 250 kg/cm ² to 600 kg/cm ²
Process Temperature	: -40 °C to 200 °C or as per fill fluid
Instrument Connection	: 1/2" BSP (F)
	: 1/4" BSP (F) for type S14
Process Connection	: 1/2" BSP (M)
	: 1/4" BSP (F) for type S14
Fill Fluid	: Silicon Oil - DC 200
Mounting	: Direct (Without capillary)

Diaphragm	: AISI 316L SS
Body	: AISI 316 SS



TYPE "S14"

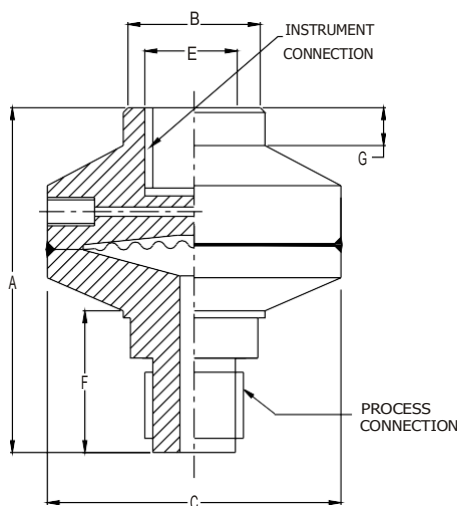


A	B	C	D	E	Approx. Wt.#
10	30	10	34	1/4" BSP(F)	350.0

(# Weight in grams with box for Standard Model.)

DIMENSIONS - STANDARD VERSION

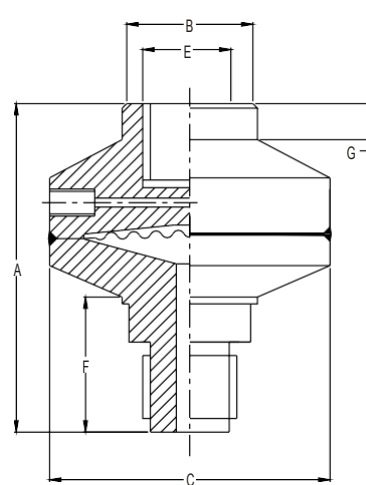
TYPE "S11"



A	B	C	E	F	G	Approx. Wt.#
73	30	62	1/2"BSP(F)	30	8	700.0

(# Weight in grams with box for Standard Model.)

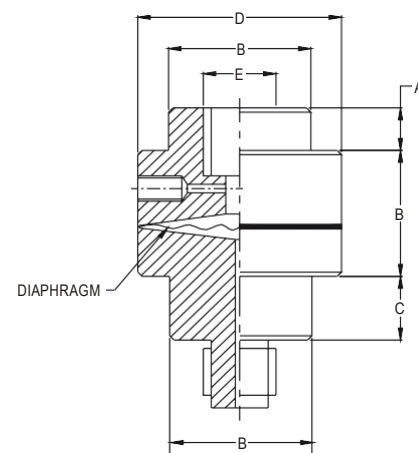
TYPE "S12"



A	B	C	E	F	G	Approx. Wt.#
68.5	30	53	1/2"BSP(F)	35	8	600.0

(# Weight in grams with box for Standard Model.)

TYPE "S13"



A	B	C	D	E	Approx. Wt.#
10	22	15	46.5	1/2"BSP(F)	400.0

(# Weight in grams with box for Standard Model.)

Notes : ● Drawings are not to scale. ● All Dimensions are in mm.



Industrix Precise Solutions Private Limited

Room No – 303, Bhumika Residency, Plot No-21, Sector-20, Roadpali, Kalamboli, Panvel (Tal.), Raigad (Dist.), Maharashtra, India – 410218.

Mobile: +91 99309 98399 / +91 99674 97447

E-mail: admin@ipspl.in / sales@ipspl.in Website: www.ipspl.in

CIN : U52399MH2021PTC368555

HOW TO ORDER

IPS-DS-04

BASIC MODEL

CODE

IPS-DS-04

OPTIONAL EXTRAS

[It is recommended that the MOC of Diaphragm should be equivalent.]

SEAL TYPE

S11	-1 kg/cm ² to 0 & 0 to 4 kg/cm ² (Standard)	S13	100 kg/cm ² to 400 kg/cm ²
S12	6 kg/cm ² to 70 kg/cm ²	S14	250 kg/cm ² to 600 kg/cm ²

XXX

INSTRUMENT CONNECTION (*For seal type S14)

VN	1/4" BSP(F) (Standard)*	VP	3/8" BSP (F)	VL	1/2" BSP (F) (Standard)
VO	1/4" NPT (F)	VM	1/2" NPT (F)		

XX

BODY

CL	AISI 316 SS (Standard)	CM	AISI 316L SS
-----------	------------------------	-----------	--------------

XX

DIAPHRAGM

UJ	AISI 316L (Standard)
-----------	----------------------

XX

PROCESS CONNECTION (*For seal type S14)

WE	1/4" BSP(F) (Standard)*	WI	1/4" NPT (F)	WY	1/4" NPT(M)	WS	1/4" BSP(M)
WC	3/8" BSP(F)	WH	1/2" NPT (F)	WA	1/2" NPT(M)	WT	3/8" BSP(M)
WD	1/2" BSP(F)					WU	1/2" BSP(M) (Standard)

XX

Note : Connections like Metric, PT/ PF/ Flaired / UNF/ G/ R etc can be provided on request.

FILLING FLUIDS (* Consult factory for specifications, price and delivery.)

US	FLUROLUBE 4.2 [-45 to 175 °C]	UY	SILICON DC 704 [10 to 337 °C]
UT	FLUROLUBE 6.3 [-40 to 235 °C]	UZ	SILICON DC 710 [7 to 371 °C]
UU	FLUROLUBE FS-5 [-28 to 148 °C]	VA	SYLTHERM 800 [-40 to 315 °C]
UV	FOOD GRADE OIL [-20 to 140 °C]	VB	SYLTHERM XLT [-100 to 260 °C]
UX	SILICON DC 200 [-40 to 205 °C] (Standard)	VC	HALOCARBON OIL*

XX

REMOTE MOUNTING (With capillary of Max. Up to 2 Mtrs.)

SPECIFY IN METERS (e.g. 1.5 = 1.5 METERS 2.0 = 2 METERS)

3Mtr.

CAPILLARY

PE	AISI 304 SS	PG	AISI 316 SS
-----------	-------------	-----------	-------------

XX

CAPILLARY COVERED WITH ARMOUR (Applicable with PE or PG if selected)

PF	AISI 304 SS	PH	AISI 316 SS	PI	PVC (Ambient Temp. Max. 60°C)
-----------	-------------	-----------	-------------	-----------	-------------------------------

XX

OTHER OPTIONS

TB	HELIUM LEAK TEST	TC	DRY SEAL ONLY WITHOUT INSTRUMENT	GH	MATERIAL TEST CERTIFICATES*
-----------	------------------	-----------	----------------------------------	-----------	-----------------------------

XX

* MATERIAL TEST CERTIFICATES WILL BE PROVIDED FOR WETTED PARTS ONLY WITH CHEMICAL COMPOSITION TESTING. FOR OTHERS, PLEASE CONSULT FACTORY.

Note : Specifications and dimensions given in this product catalogue represents the state of engineering at the time of printing.

Modifications may take place and materials specified may be replaced by others without prior notice.

Due to continuous development of our products technical information's are subject to change.

Please ensure the compatibility between the measured medium and the contacting part of the product when placing an order.

IPSPL reserves the right to make any change in this datasheet without notice. The information provided is believed to be accurate and reliable as of this product sheet.

Contact factory for custom configurations not shown



Industrixy Precise Solutions Private Limited

Room No – 303, Bhumika Residency, Plot No-21, Sector-20, Roadpali, Kalamboli, Panvel (Tal.), Raigad (Dist.), Maharashtra, India – 410218.

Mobile: +91 99309 98399 / +91 99674 97447

E-mail: admin@ipspl.in / sales@ipspl.in Website: www.ipspl.in

CIN : U52399MH2021PTC368555